

End of Term Newsletter

Christmas 2023



Principal's Message:

It has been wonderful end to the term with some brilliant whole school events with Christmas Jumper Day, Christmas Lunch, Year visits to the Panto ("Oh Yes they did!"), our Christmas Concert along with a Year 8/9 Silent Disco and many other festivities!

As we see 2023 come to an end, we are incredibly excited about 2024 in the school, as we continue in our pursuit to be the best that we can be. Our Year 11 students are continuing to perform very well and their most recent Mock Exam result show significantly positive signs for the Summer - with the next set of Mock Exams starting after February half term.

I would like to wish our students and their families a peaceful and restful break. Merry Christmas and a prosperous New Year.

Stay Safe and enjoy the festive period!

Skidmore's
Final Thought

Staffing Updates:

We are excited to be adding to the number of teaching staff in the Academy in January. With Mr Paleschi (Head of Science) joining us directly after the break. In addition Mrs Oliesi will be joining us as 2nd in Maths and Miss narroway joining the Humanities team, teaching History.

We do, however, wish to say good luck and farewell to Mr Marsay (current Head of Science) as he takes time away from teaching, moving to South Asia with his family!

A new Prime Minister!

Reem is living the dream!

We announced the outcome of our Prime Minister elections this week, with Reem (Y11) being elected by students and staff.

It was a closely fought campaign and well done to Hayan and Zain who are the Deputy Prime Ministers who will be supporting Reem through the remainder of this year!



End of Term Newsletter

Christmas 2023



2024 - Term Dates and Key Dates:

Term 2

Monday 8 January 2024	Students return to school after Christmas holiday
Tuesday 16 January 2024	Year 9 Pathways and Year 9/10 progress evening
Tuesday 30 January 2024	Year 11 100 days and counting
Monday 5 February 2024	Parent information evening
Friday 9 February 2024	Last school day of the half term for students
Monday 12 February 2024	February half term begins

Monday 19 February 2024	Students return to school after February half term
Monday 19 February - Friday 1 March 2024	Year 11 Mock Exams
Wednesday 20 March 2024	Iftar Celebration evening
Friday 22 March 2024	Last school day of the term for students
Monday 25 March 2024	Easter holiday begins

Term 3

Monday 8 April 2024	Students return to school & Year 11 Mock results
Friday 12 April 2024	Eid Celebration meal
Tuesday 16 April 2024	Year 8 information & Year 7/8 progress evening
Monday 6 May 2024	<i>Bank Holiday - students NOT in school</i>
Thursday 9 May 2024	<i>GCSE Examinations begin</i>
Friday 24 May 2024	Last school day of the half term for students
Monday 27 May 2024	May half term begins

Monday 3 June 2024	Students return to school after May half term
Monday 24 June 2024	Year 10 Mock exams begin
Tuesday 16 July 2024	Year 10 into Year 11 evening and mock results
Friday 19 July 2024	Last school day of the year for students
Monday 22 July 2024	PD Day - students NOT in school
Tuesday 23 July 2024	Summer holiday begins

End of Term Newsletter

Christmas 2023



Uniform:

As parents and carers approach the break, when families usually buy and replace uniform, please can we provide a reminder of uniform expectations:

- Plain black shoes (must be polishable) – no trainers, boots, pumps or canvas shoes will be allowed
- Socks/tights- they must be plain black
- Jewellery- No jewellery is allowed except a wrist watch and a Medic Alert necklace or bracelet. Smart watches are not allowed in the Academy. No rings or ear piercings
- Outwood tie- must be worn at all times
- Bag- all students need a bag that can fit in a planner and an A4 workbook. All students must have their planner with them.
- Hair colour- must be a natural hair colour
- Nail polish and any type of false nails (including clear gels, acrylics, extensions, etc) are not allowed.
- No hoodies, coats or jackets to be worn inside school

Should you be unsure, or required further details on our uniform policy, details can be found here: <https://www.acklam.outwood.com/uniform>

UNIFORM POLICY:

A reminder to parents, that as of last January students replacing their uniform will **no longer be required to purchase skirts/trousers with an Outwood logo.**

For more information about what is deemed acceptable, please see the graphic on the next page.

Parents can purchase trousers/skirts from supermarkets, or high street shops but please check the restrictions as skinny fit trousers, for example, are not permitted.

Uniform Support

For any families who may be struggling on need support, please refer to our [Hardship Policy](#).

Also we have access to our 'Preloved Uniform' should you require this service, please go to www.trutex.com and use the school code LEA00980SC.



End of Term Newsletter

Christmas 2023



Uniform Guide



We believe that a smart uniform improves discipline, self-esteem and self-respect. Uniform focuses attention upon learning and away from distractions. So that all pupils have a sense of pride in their appearance, we ask that the uniform is worn appropriately and in its entirety, as described below.

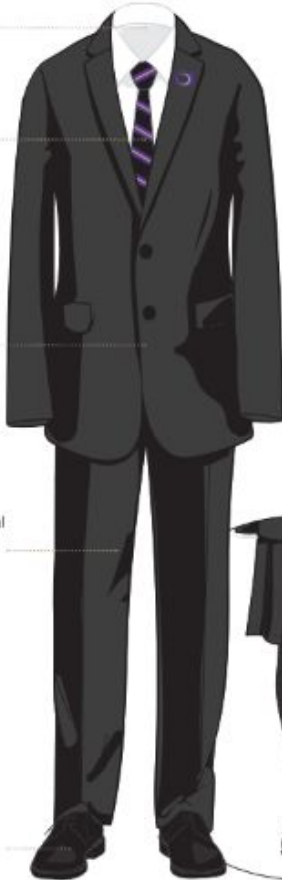
Shirt - school or plain white, long or short sleeved shirt with a stiff collar.

Tie - school clip-on tie available to buy from school, Trutex Direct and approved local uniform suppliers.

Jacket - black school jacket with school logo available to buy from Trutex Direct and approved local uniform suppliers.

Trousers - black tailored formal style trousers worn with plain black socks. Please see reverse for more information.

Shoes - plain black shoes free from embellishments and decorations. Heels should be no higher than 2.5cm/1 inch. No trainers, boots, pumps or canvas shoes. Please refer to the Uniform Policy for more information.



Students are reminded that

- sleeves on shirts, jumpers or jackets must not be rolled up at any time;
- shirts must be tucked in;
- ties must not be defaced with writing or by pulling threads;
- school bags must be large enough to fit a school planner and A4 workbooks;
- only badges agreed by the school may be worn on jackets. Other badges, e.g. charity badges, must only be on outdoor coats or bags;
- consequences can/will be issued for any uniform misdemeanour.

Optional V Neck Jumper - black full length sleeved V neck jumper.

Optional Outdoor Coats - should be fit for purpose and have no large logos. Please note that hoodies, fur, denim and studded leather jackets are not allowed. We also recommend that children who walk, scoot or cycle to school wear an item with high visibility, particularly in the darker winter months.

Version 1 - December 2022

Tunic Dress - tunic dress - black, with school logo available to buy from Trutex Direct and approved local uniform suppliers.

Skirt - black tailored formal skirt which sits on or just above the knee. Must be worn with black tights. Please see reverse for more information.

Tights - plain black, opaque (not patterned) and a minimum of 40 denier. Nothing else should be worn on top or under the tights such as additional socks.

End of Term Newsletter

Christmas 2023



NON-LOGOED UNIFORM GUIDE

Effective from 1 January 2023, secondary students will no longer be required to wear logoed trousers and skirts. Students will still be required to wear appropriate school trousers and skirts, as described in this guide.

Trousers

- must be plain black and in a tailored formal style;
- must **not** be cropped, tight/skinny fit, made of stretch or patterned fabric. They should **not** have decorative buttons, buckles or fashion belts;
- jeans, flares, cargo, bootlegged trousers, tracksuit bottoms, jeggings or leggings are **not** acceptable.



Skirts

- must be plain black and in a tailored formal style. Skirts may be A-line, pencil or pleated (twin, knife or box pleat);
- tight-fitting, tube skirts are **not** acceptable;
- must sit on or just above the knee;
- must **not** be made of jersey, stretch or patterned fabric;
- must be worn with a minimum of plain black 40 denier tights.



Staying Safe This Holiday Period

Should any of our students, or families need some additional support over the Christmas period, then please utilise the Academy 'Mental Wellbeing' page of our website.

It can be found here:

<https://mentalwellbeing.outwood.com/>

There are some brilliant resources and advice available, through the NHS, at the link below:

<https://thismayhelp.me/how-to-support-your-childs-mental-health/>

Or alternatively by clicking the 'Green Button' on the front page of our website. This page gives links to key agencies who may be able to support, in addition to further websites which include additional guidance and support.

Y6 Transition 2021

Mental Wellbeing

Contact Us

End of Term Newsletter

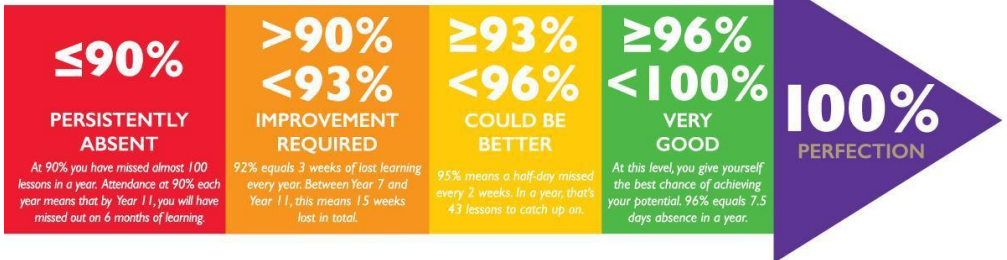
Christmas 2023



Lateness:

- We want all of our students to be punctual to the Academy to avoid missing learning time.
- If a student arrives 5 minutes late on a daily basis, that results in 3 days of learning lost in the academic year.
- If a student arrives 30 minutes late on a daily basis, that results in 19 days of learning lost in the academic year.
- From September the time a student will be recorded as 'late to school' changed, due to a change in DFE guidance. All registers must now close 30 minutes after they open, ours will therefore close at 8:50am and anyone signed into school after this point will be classified as 'late to school'.
- Please can parents support the Academy in ensuring that all students arrive on site in good time.

ATTENDANCE MATTERS



Parking:

- May we ask all parents and guardians who collect students by car, not to park on the grass at Hall Gardens (on the approach to Acklam Hall)
- This is private land and there are no parking notices on display.
- Please use the Visitor Car Park by the school crossing. The Academy has significant space available at front of school, to the left hand side as you enter our site.
- Please feel free to utilise this space.

End of Term Newsletter

Christmas 2023



Seasonal Advice: FROZEN WATER

THE DANGERS OF FROZEN WATER

Every year children are at risk when they are tempted to play on the ice formed on open waters and adults find themselves at risk as they attempt to save them. Over 50 % of ice related drowning involved an attempted rescue of another person or a dog.

Areas with frozen waters can be beautiful to look at but they are also extremely dangerous. Here are some useful tips to help you enjoy these areas safely.

TOP TIPS TO STAY SAFE

NEVER GO ON THE ICE UNDER ANY CIRCUMSTANCES

This includes attempting to rescue another person or animal who may have fallen through the ice.

ONLY USE WELL LIT AREAS

Try to take walks in the daylight but if you must walk in the evening, only use well lit areas and avoid anywhere with water.

KEEP AWAY FROM THE EDGE OF THE WATER

Never go close to the edge or lean over to touch the ice. You may over balance or trip and fall in.

ALWAYS WALK WITH AN ADULT OR A GROUP OF FRIENDS

Look out for each other and if someone does fall through the ice there will be others around to raise the alarm and get help

WHAT TO DO IF YOU FALL THROUGH THE ICE

Keep calm and shout 'help'

Spread your arms across the surface of the ice in front of you

Try to kick your legs and pull yourself out of the water and on to the ice

Lie flat, spreading your weight across the surface and pull yourself to the bank, you may find it easier to roll.

If you cannot climb out, wait for help and keep as still as possible. Keep your head above the water, press your arms by your side and keep your legs together

Once you are safe, it is important that you go to hospital immediately for a check up



WHAT TO DO IF YOU SEE SOMEONE FALL THROUGH THE ICE

Shout for **'HELP'** and dial **999** or **112** if you can

DO NOT walk on to the ice to attempt a rescue

Shout to the person to **'KEEP STILL'** and offer reassurance.

If they are close enough, **LIE DOWN TO AVOID OVERBALANCING** and falling onto the ice, and try to reach them with a tree branch clothing tied together or anything else which can extend your reach.

If you cannot reach them, **SLIDE SOMETHING** which floats across the ice, such as a plastic bottle or a football, so that they can hold on to it to stay afloat whilst help is on the way.

If they are too far away, **WAIT FOR THE EMERGENCY SERVICES** and reassure the casualty from the safety of the bank.

StayWise

End of Term Newsletter

Christmas 2023



Academy Events

Red Sky Foundation Christmas Card



ACE Award Celebration



Year 11 - Theatre Company Visit



SCHOOL RETURNS:
Monday 8th January 2024!
We wish all of our families a wonderful Christmas and all the very best for 2024!



Academy Events

Year 8/9 Silent Disco



ACE Award Celebration

